

# TEST REPORT

Report No.: 2501Y83065E

Date: November 27, 2025

Page 1 of 19

**D-ROBOTICS HOLDING LIMITED**

**SUITE 603 , 6/F LAWS COMM PLAZA 788 CHEUNG SHA WAN RD KLN HONG KONG**

Report on the submitted samples said to be:

Sample Description: RDK S100

Brand: D-Robotics

Tested Style/Item No.: KS1P75Y

Additional Style/ Item No.: KS1E55Y

Remark:

As claimed by the material declaration submitted by the client, the material of Additional Style/ Item No. are the same as the tested Style/ Item No. . But the results only for the tested sample. And the applicant will undertake all differences and risk.

Sample Receiving Date: October 27, 2025

Lately Re-submit Date: October 30, 2025

Testing Period: October 27, 2025 - November 26, 2025

Result: **Please refer to next page(s).**

Signed for and on behalf of

BACL

*Queenie Lee*

Checked by: \_\_\_\_\_  
Queenie Lee

*Len Xie*

Approved by: \_\_\_\_\_  
Len Xie



# TEST REPORT

Report No.: 2501Y83065E

Date: November 27, 2025

Page 2 of 19

\*\*\*\*\*

Summary of Test Result:

**TEST REQUEST**

**CONCLUSION**

A RoHS Directive 2011/65/EU and amendment directives (EU) 2015/863 on Lead, Cadmium, Mercury, Hexavalent Chromium, PBBs & PBDEs, Phthalates (DBP, BBP, DEHP, DIBP) content

A.1 XRF screening test

Pass

A.2 Wet Chemical Testing

A.2.1 Chromium VI (Cr(VI)) Content

Pass

A.2.2 PBBs & PBDEs content

Pass

A.3 Phthalates (DBP, BBP, DEHP, DIBP) content

Pass

\*\*\*\*\*

# TEST REPORT

Report No.: 2501Y83065E

Date: November 27, 2025

Page 3 of 19

**A RoHS Directive 2011/65/EU and amendment directives (EU) 2015/863 on Lead, Cadmium, Mercury, Hexavalent Chromium, PBBs & PBDEs, Phthalates(DBP, BBP, DEHP, DIBP) content**

**A.1 XRF screening test**

Test method: IEC 62321-3-1:2013

Seq No.	Tested Part(s)	Result				
		Pb	Cd	Hg	Cr	Br
(1)	White printed black coated coppery metal(FPC, RDK S100)	BL	BL	BL	BL	BL
(2)	Silvery solder(THT, FPC, RDK S100)	BL	BL	BL	BL	---
(3)	Black printed beige plastic with glue(pad, FPC, RDK S100)	BL	BL	BL	BL	BL
(4)	Black plastic(SUB plug, FPC, RDK S100)	BL	BL	BL	BL	BL
(5)	Golden plated silvery metal(pin, SUB plug, FPC, RDK S100)	BL	BL	BL	BL	---
(6)	Black plastic(MAIN socket, FPC, RDK S100)	BL	BL	BL	BL	BL
(7)	Golden plated silvery metal(pin, MAIN socket, FPC, RDK S100)	BL	BL	BL	BL	---
(8)	Brown body(SMD capacitor, CPU PCB, small PCB, PCB, RDK S100)	BL	BL	BL	BL	BL
(9)	Coppery body(IC, CPU PCB, small PCB, PCB, RDK S100)	BL	BL	BL	BL	BL
(10)	Silvery solder(SMT,CPU PCB, small PCB, PCB, RDK S100)	BL	BL	BL	BL	---
(11)	Green coated brown plastic with coppery metal(CPU PCB, small PCB, PCB, RDK S100)	BL	BL	BL	BL	BL
(12)	Bronze metal(shielding case, CPU, small PCB, PCB, RDK S100)	BL	BL	BL	BL	---
(13)	Bronze body(SMD inductor, small PCB, PCB, RDK S100)	BL	BL	BL	BL	BL
(14)	Black body(SMD inductor, small PCB, PCB, RDK S100)	BL	BL	BL	BL	BL
(15)	Black / white body(small SMD resistor, small PCB, PCB, RDK S100)	BL	BL	BL	BL	BL
(16)	Black / white body(big SMD resistor, small PCB, PCB, RDK S100)	BL	BL	BL	BL	BL
(17)	Silvery body(small crystal, small PCB, PCB, RDK S100)	BL	BL	BL	BL	BL
(18)	Silvery body(big crystal, small PCB, PCB, RDK S100)	BL	BL	BL	BL	BL
(19)	Brown body(minimum SMD capacitor, small PCB, PCB, RDK S100)	BL	BL	BL	BL	BL
(20)	Brown body(small SMD capacitor, small PCB, PCB, RDK S100)	BL	BL	BL	BL	BL
(21)	Brown body(medium SMD capacitor, small PCB, PCB, RDK S100)	BL	BL	BL	BL	BL
(22)	Brown body(big SMD capacitor, small PCB, PCB, RDK S100)	BL	BL	BL	BL	BL
(23)	Brown body(maximum SMD capacitor, small PCB, PCB, RDK S100)	BL	BL	BL	BL	BL
(24)	Black body(small square IC, small PCB, PCB, RDK S100)	BL	BL	BL	BL	BL
(25)	Black body(big square IC, small PCB, PCB, RDK S100)	BL	BL	BL	BL	BL
(26)	Black body(small rectangle IC, small PCB, PCB, RDK S100)	BL	BL	BL	BL	BL

# TEST REPORT

Report No.: 2501Y83065E

Date: November 27, 2025

Page 4 of 19

Seq No.	Tested Part(s)	Result				
		Pb	Cd	Hg	Cr	Br
(27)	Black body(medium rectangle IC, small PCB, PCB, RDK S100)	BL	BL	BL	BL	BL
(28)	Black body(big rectangle IC, small PCB, PCB, RDK S100)	BL	BL	BL	BL	BL
(29)	Black body(maximum rectangle IC, small PCB, PCB, RDK S100)	BL	BL	BL	BL	BL
(30)	Silvery solder(SMT, small PCB, PCB, RDK S100)	BL	BL	BL	BL	---
(31)	White printed green coated beige plastic with coppery metal(small PCB, PCB, RDK S100)	BL	BL	BL	BL	BL
(32)	Black / white body(small SMD resistor, PCB, RDK S100)	BL	BL	BL	BL	BL
(33)	Black / white body(medium SMD resistor, PCB, RDK S100)	BL	BL	BL	BL	BL
(34)	Black / white body(big SMD resistor, PCB, RDK S100)	BL	BL	BL	BL	BL
(35)	Black / white body(maximum SMD resistor, PCB, RDK S100)	BL	BL	BL	BL	BL
(36)	Grey body(small SMD resistor, PCB, RDK S100)	BL	BL	BL	BL	BL
(37)	Grey body(big SMD resistor, PCB, RDK S100)	BL	BL	BL	BL	BL
(38)	Black body(SMD triode, PCB, RDK S100)	BL	BL	BL	BL	BL
(39)	Black body(small SMD diode, PCB, RDK S100)	BL	BL	BL	BL	BL
(40)	Black body(medium SMD diode, PCB, RDK S100)	BL	BL	BL	BL	BL
(41)	Black body(big SMD diode, PCB, RDK S100)	BL	BL	BL	BL	BL
(42)	Black body(small SMD inductor, PCB, RDK S100)	BL	BL	BL	BL	BL
(43)	Black body(medium SMD inductor, PCB, RDK S100)	BL	BL	BL	BL	BL
(44)	Black body(big SMD inductor, PCB, RDK S100)	BL	BL	BL	BL	BL
(45)	Black body(maximum SMD inductor, PCB, RDK S100)	BL	BL	BL	BL	BL
(46)	Grey body(SMD inductor, PCB, RDK S100)	BL	BL	BL	BL	BL
(47)	Silvery body(crystal, PCB, RDK S100)	BL	BL	BL	BL	BL
(48)	Brown body(minimum SMD capacitor, PCB, RDK S100)	BL	BL	BL	BL	BL
(49)	Brown body(small SMD capacitor, PCB, RDK S100)	BL	BL	BL	BL	BL
(50)	Brown body(medium SMD capacitor, PCB, RDK S100)	BL	BL	BL	BL	BL
(51)	Brown body(big SMD capacitor, PCB, RDK S100)	BL	BL	BL	BL	BL
(52)	Brown body(maximum SMD capacitor, PCB, RDK S100)	BL	BL	BL	BL	BL
(53)	Orange / yellow body(SMD capacitor, PCB, RDK S100)	BL	BL	BL	BL	BL
(54)	Black body(minimum rectangle IC, PCB, RDK S100)	BL	BL	BL	BL	BL
(55)	Black body(small rectangle IC, PCB, RDK S100)	BL	BL	BL	BL	BL
(56)	Black body(medium rectangle IC, PCB, RDK S100)	BL	BL	BL	BL	BL

Bay Area Compliance Laboratories Corp. (Shenzhen)

5/F. (B-West), 6&7/F., The 3rd Phase of Wanli Industrial Building D, Shihua Road, Fubao Community, Fubao Subdistrict, Futian District, Shenzhen, Guangdong, China

QB-CH-R001 (V1.0)

Tel: +86-755-33320018 Fax: +86-755-33320008

# TEST REPORT

Report No.: 2501Y83065E

Date: November 27, 2025

Page 5 of 19

Seq No.	Tested Part(s)	Result				
		Pb	Cd	Hg	Cr	Br
(57)	Black body(big rectangle IC, PCB, RDK S100)	BL	BL	BL	BL	BL
(58)	Black body(maximum rectangle IC, PCB, RDK S100)	BL	BL	BL	BL	BL
(59)	Black body(minimum square IC, PCB, RDK S100)	BL	BL	BL	BL	BL
(60)	Black body(small square IC, PCB, RDK S100)	BL	BL	BL	BL	BL
(61)	Black body(medium square IC, PCB, RDK S100)	BL	BL	BL	BL	BL
(62)	Black body(big square IC, PCB, RDK S100)	BL	BL	BL	BL	BL
(63)	Black body(maximum square IC, PCB, RDK S100)	BL	BL	BL	BL	BL
(64)	Silvery metal(pin, medium switch, PCB, RDK S100)	BL	BL	BL	BL	---
(65)	Silvery metal(contact plate, medium switch, PCB, RDK S100)	BL	BL	BL	BL	---
(66)	White plastic(slider, medium switch, PCB, RDK S100)	BL	BL	BL	BL	BL
(67)*	Black plastic(cover, medium switch, PCB, RDK S100)	BL	BL	BL	BL	X
(68)	Silvery metal(pin, small switch, PCB, RDK S100)	BL	BL	BL	BL	---
(69)	Silvery metal(contact plate, small switch, PCB, RDK S100)	BL	BL	BL	BL	---
(70)	Yellow clear plastic(insulating strip, small switch, PCB, RDK S100)	BL	BL	BL	BL	BL
(71)*	Black plastic(base, small switch, PCB, RDK S100)	BL	BL	BL	BL	X
(72)	Black plastic(button, small switch, PCB, RDK S100)	BL	BL	BL	BL	BL
(73)	Silvery metal(cover, small switch, PCB, RDK S100)	BL	BL	BL	BL	---
(74)	Silvery metal(pin, big switch, PCB, RDK S100)	BL	BL	BL	BL	---
(75)	Silvery metal(contact plate, big switch, PCB, RDK S100)	BL	BL	BL	BL	---
(76)	Black plastic(slider, big switch, PCB, RDK S100)	BL	BL	BL	BL	BL
(77)	Black plastic(cover, big switch, PCB, RDK S100)	BL	BL	BL	BL	BL
(78)	Silvery metal(cover, big switch, PCB, RDK S100)	BL	BL	BL	BL	---
(79)	Coppery plated silvery metal(pin, small socket, PCB, RDK S100)	BL	BL	BL	BL	---
(80)	Black plastic(small socket, PCB, RDK S100)	BL	BL	BL	BL	BL
(81)	Coppery plated silvery metal(pin, big socket, PCB, RDK S100)	BL	BL	BL	BL	---
(82)	Black plastic(big socket, PCB, RDK S100)	BL	BL	BL	BL	BL
(83)	Silvery metal(pin, small plug, PCB, RDK S100)	BL	BL	BL	BL	---
(84)*	Black plastic(small plug, PCB, RDK S100)	BL	BL	BL	BL	X
(85)	Coppery plated silvery metal(pin, big plug, PCB, RDK S100)	BL	BL	BL	BL	---
(86)*	Orange plastic(big plug, PCB, RDK S100)	BL	BL	BL	BL	X

# TEST REPORT

Report No.: 2501Y83065E

Date: November 27, 2025

Page 6 of 19

Seq No.	Tested Part(s)	Result				
		Pb	Cd	Hg	Cr	Br
(87)	Silvery metal(pin, small connector, PCB, RDK S100)	BL	BL	BL	BL	---
(88)	Grey plastic(small connector, PCB, RDK S100)	BL	BL	BL	BL	BL
(89)	Silvery metal(pin, big white connector, PCB, RDK S100)	BL	BL	BL	BL	---
(90)	White plastic(big connector, PCB, RDK S100)	BL	BL	BL	BL	BL
(91)	Coppery plated silvery metal(pin, small black connector, PCB, RDK S100)	BL	BL	BL	BL	---
(92)	Black plastic(small connector, PCB, RDK S100)	BL	BL	BL	BL	BL
(93)	Silvery metal(pin, big black connector, PCB, RDK S100)	BL	BL	BL	BL	---
(94)*	Black plastic(big connector, PCB, RDK S100)	BL	BL	BL	BL	X
(95)*	Black plastic(holder, power socket, PCB, RDK S100)	BL	BL	BL	BL	X
(96)	Silvery metal(contact clip, power socket, PCB, RDK S100)	BL	BL	BL	BL	---
(97)	Coppery plated silvery metal(pin, power socket, PCB, RDK S100)	BL	BL	BL	BL	---
(98)	Silvery metal(small cover, power socket, PCB, RDK S100)	BL	BL	BL	BL	---
(99)	Silvery metal(cover, power socket, PCB, RDK S100)	BL	BL	BL	BL	---
(100)	Silvery metal(pin, type-C socket, PCB, RDK S100)	BL	BL	BL	BL	---
(101)	Black plastic(pin holder, type-C socket, PCB, RDK S100)	BL	BL	BL	BL	BL
(102)	Silvery metal(cover, type-C socket, PCB, RDK S100)	BL	BL	BL	BL	---
(103)	Silvery metal(pin, HDMI socket, PCB, RDK S100)	BL	BL	BL	BL	---
(104)*	Black plastic(pin holder, HDMI socket, PCB, RDK S100)	BL	BL	BL	BL	X
(105)	Silvery metal(cover, HDMI socket, PCB, RDK S100)	BL	BL	BL	BL	---
(106)	Silvery metal(holder, USB socket, PCB, RDK S100)	BL	BL	BL	BL	---
(107)	Coppery plated silvery metal(pin, USB socket, PCB, RDK S100)	BL	BL	BL	BL	---
(108)	Blue plastic(pin holder, USB socket, PCB, RDK S100)	BL	BL	BL	BL	BL
(109)	Silvery metal(pin, USB socket, PCB, RDK S100)	BL	BL	BL	BL	---
(110)	Blue plastic(base, USB socket, PCB, RDK S100)	BL	BL	BL	BL	BL
(111)	Silvery metal(cover, USB socket, PCB, RDK S100)	BL	BL	BL	BL	---
(112)	Silvery metal(pin, yellow LED, PCB, RDK S100)	BL	BL	BL	BL	---
(113)	Yellow clear body(LED, PCB, RDK S100)	BL	BL	BL	BL	BL
(114)	Silvery metal(pin, green LED, PCB, RDK S100)	BL	BL	BL	BL	---
(115)	Green clear body(LED, PCB, RDK S100)	BL	BL	BL	BL	BL
(116)*1	Coppery metal(small holder, part, RDK S100)	OL (20226)	BL	BL	BL	---

# TEST REPORT

Report No.: 2501Y83065E

Date: November 27, 2025

Page 7 of 19

Seq No.	Tested Part(s)	Result				
		Pb	Cd	Hg	Cr	Br
(117)	Coppery metal(nut, part, RDK S100)	BL	BL	BL	BL	---
(118)	Black plated silvery metal(screw, part, RDK S100)	BL	BL	BL	BL	---
(119)	Silvery metal(screw, cover, RDK S100)	BL	BL	BL	BL	---
(120)	Clear plastic(cover, RDK S100)	BL	BL	BL	BL	BL
(121)*1	Coppery metal(medium holder, part, RDK S100)	OL (20472)	BL	BL	BL	---
(122)*1	Coppery metal(big holder, part, RDK S100)	OL (20663)	BL	BL	BL	---
(123)	Black plated silvery metal(thick screw, RDK S100)	BL	BL	BL	BL	---
(124)	Black plated silvery metal(thin screw, RDK S100)	BL	BL	BL	BL	---
(125)	Black plated silvery metal(screw, fan, RDK S100)	BL	BL	BL	BL	---
(126)	White plastic(cover, connector, fan, RDK S100)	BL	BL	BL	BL	BL
(127)	Silvery metal(pin, connector, fan, RDK S100)	BL	BL	BL	BL	---
(128)	Grey printed blue soft plastic(wire jacket, fan, RDK S100)	BL	BL	BL	BL	BL
(129)	Yellow soft plastic(wire jacket, fan, RDK S100)	BL	BL	BL	BL	BL
(130)	Grey printed black soft plastic(wire jacket, fan, RDK S100)	BL	BL	BL	BL	BL
(131)	Black printed red soft plastic(wire jacket, fan, RDK S100)	BL	BL	BL	BL	BL
(132)	Silvery metal(wire core, fan, RDK S100)	BL	BL	BL	BL	---
(133)*	Black plastic(cover, fan, RDK S100)	BL	BL	BL	BL	X
(134)	Black / green printed silvery plastic with adhesive(label, cover, fan, RDK S100)	BL	BL	BL	BL	BL
(135)*	Black plastic(flabellum, cover, fan, RDK S100)	BL	BL	BL	BL	X
(136)	Silvery metal(cover, motor, fan, RDK S100)	BL	BL	BL	BL	---
(137)	Brown magnet(motor, fan, RDK S100)	BL	BL	BL	BL	---
(138)	Silvery metal(role, motor, fan, RDK S100)	BL	BL	BL	BL	---
(139)	White plastic(holder, role, motor, fan, RDK S100)	BL	BL	BL	BL	BL
(140)	Silvery metal(spring, role, motor, fan, RDK S100)	BL	BL	BL	BL	---
(141)*	Silvery metal(outer ring, bearings, motor, fan, RDK S100)	BL	BL	BL	X	---
(142)*	Silvery metal(inner ring, bearings, motor, fan, RDK S100)	BL	BL	BL	X	---
(143)	Silvery metal(ball, bearings, motor, fan, RDK S100)	BL	BL	BL	BL	---
(144)	Brown plastic(holder, ball, bearings, motor, fan, RDK S100)	BL	BL	BL	BL	BL
(145)	Silvery metal(case, bearings, motor, fan, RDK S100)	BL	BL	BL	BL	---

# TEST REPORT

Report No.: 2501Y83065E

Date: November 27, 2025

Page 8 of 19

Seq No.	Tested Part(s)	Result				
		Pb	Cd	Hg	Cr	Br
(146)	Silvery metal(holder, case, bearings, motor, fan, RDK S100)	BL	BL	BL	BL	---
(147)	Coppery metal(wire coil, motor, fan, RDK S100)	BL	BL	BL	BL	---
(148)*	Black plastic(insulating ring, motor, fan, RDK S100)	BL	BL	BL	BL	X
(149)	Silvery metal(plate, motor, fan, RDK S100)	BL	BL	BL	BL	---
(150)*	White printed blue coated beige plastic with coppery metal(PCB, motor, fan, RDK S100)	BL	BL	BL	BL	X
(151)	Silvery solder(SMT, PCB, motor, fan, RDK S100)	BL	BL	BL	BL	---
(152)	Silvery solder(cable welding, PCB, motor, fan, RDK S100)	BL	BL	BL	BL	---
(153)	Black body(IC, PCB, motor, fan, RDK S100)	BL	BL	BL	BL	BL
(154)	Brown body(SMD capacitor, PCB, motor, fan, RDK S100)	BL	BL	BL	BL	BL
(155)	Black body(SMD diode, PCB, motor, fan, RDK S100)	BL	BL	BL	BL	BL
(156)	Black / white body(SMD resistor, PCB, motor, fan, RDK S100)	BL	BL	BL	BL	BL
(157)	Black plated silvery metal(cooling fin, PCB, RDK S100)	BL	BL	BL	BL	---
(158)	White thermal grease(cooling fin, PCB, RDK S100)	BL	BL	BL	BL	BL
(159)*	White printed black coated brown plastic with coppery metal(PCB, RDK S100)	BL	BL	BL	BL	X
(160)	Silvery solder(SMT, PCB, RDK S100)	BL	BL	BL	BL	---
(161)	Silvery solder(THT, PCB, RDK S100)	BL	BL	BL	BL	---
(162)	Silvery metal(cover, net socket, PCB, RDK S100)	BL	BL	BL	BL	---
(163)*	Black plastic(cover, net socket, PCB, RDK S100)	BL	BL	BL	BL	X
(164)*	Black plastic(pin holder, net socket, PCB, RDK S100)	BL	BL	BL	BL	X
(165)	Silvery metal(pin, net socket, PCB, RDK S100)	BL	BL	BL	BL	---
(166)*	Green coated brown plastic with coppery metal(PCB, net socket, PCB, RDK S100)	BL	BL	BL	BL	X
(167)	Silvery solder(SMT, PCB, net socket, PCB, RDK S100)	BL	BL	BL	BL	---
(168)	Silvery solder(THT, PCB, net socket, PCB, RDK S100)	BL	BL	BL	BL	---
(169)	Silvery solder(cable welding, PCB, net socket, PCB, RDK S100)	BL	BL	BL	BL	---
(170)	Black dry glue(sealant, PCB, net socket, PCB, RDK S100)	BL	BL	BL	BL	BL
(171)	Black magnet(PCB, net socket, PCB, RDK S100)	BL	BL	BL	BL	---
(172)	Red enameled wire(PCB, net socket, PCB, RDK S100)	BL	BL	BL	BL	BL
(173)	Green enameled wire(PCB, net socket, PCB, RDK S100)	BL	BL	BL	BL	BL
(174)	Black enameled wire(PCB, net socket, PCB, RDK S100)	BL	BL	BL	BL	BL
(175)	Coppery metal(wire core, PCB, net socket, PCB, RDK S100)	BL	BL	BL	BL	---

Bay Area Compliance Laboratories Corp. (Shenzhen)

5/F. (B-West), 6&7/F., The 3rd Phase of Wanli Industrial Building D, Shihua Road, Fubao Community, Fubao Subdistrict, Futian District, Shenzhen, Guangdong, China

QB-CH-R001 (V1.0)

Tel: +86-755-33320018 Fax: +86-755-33320008

# TEST REPORT

Report No.: 2501Y83065E

Date: November 27, 2025

Page 9 of 19

Seq No.	Tested Part(s)	Result				
		Pb	Cd	Hg	Cr	Br
(176)	Brown body(SMD capacitor, PCB, net socket, PCB, RDK S100)	BL	BL	BL	BL	BL
(177)*	Black body(IC, PCB, net socket, PCB, RDK S100)	BL	BL	BL	X	BL
(178)	Golden plated silvery metal(pin, PCB, net socket, PCB, RDK S100)	BL	BL	BL	BL	---
(179)*	Black plastic(pin holder, PCB, net socket, PCB, RDK S100)	BL	BL	BL	BL	X

Note:

--- = Not Applicable.

\* = Screening by XRF and detected by chemical method. The test result of chemical method please refer to next pages.

\*1 = According to the material declaration provided by the client, the sample of test No. 116,121,122 are exempted accordance with Annex III 6(c) of directive 2011/65/EU. The exempt items of Annex III 6(c) of directive 2011/65/EU: Copper alloy containing up to 4% lead by weight.

# TEST REPORT

Report No.: 2501Y83065E

Date: November 27, 2025

Page 10 of 19

Remark:

i Result were obtained by XRF for primary screening, and further chemical testing by ICP (for Cd, Pb, Hg), UV-Vis (for Cr(VI)) and GC-MS (for PBBs, PBDEs) are recommended to be performed, if the concentration exceeds the below warning value according to IEC62321-3-1:2013.

Element	Unit	Polymers	Metal	Composite Material
Cd	mg/kg	BL≤70-3σ<X <130+3σ≤OL	BL≤70-3σ<X <130+3σ≤OL	BL≤50-3σ<X <150+3σ≤OL
Pb	mg/kg	BL≤700-3σ<X <1300+3σ≤OL	BL≤700-3σ<X <1300+3σ≤OL	BL≤500-3σ<X <1500+3σ≤OL
Hg	mg/kg	BL≤700-3σ<X <1300+3σ≤OL	BL≤700-3σ<X <1300+3σ≤OL	BL≤500-3σ<X <1500+3σ≤OL
Cr	mg/kg	BL≤700-3σ<X	BL≤700-3σ<X	BL≤500-3σ<X
Br	mg/kg	BL≤300-3σ<X	--	BL≤250-3σ<X

Note:

BL = Below Limit

OL = Over Limit

IN/X = Inconclusive (questionable, need further chemical analysis)

ii The XRF screening test for RoHS elements – The reading may be different to the actual content in the sample be of non-uniformity composition.

iii The maximum permissible limit is quoted from the RoHS directive 2011/65/EU:

Restricted Substances	Maximum Concentration Value (mg/kg) (by weight in homogenous materials)
Cadmium (Cd)	100
Lead (Pb)	1000
Mercury (Hg)	1000
Hexavalent Chromium (Cr(VI))	1000
Polybrominated biphenyls (PBBs)	1000
Polybrominated diphenylethers (PBDEs)	1000

Disclaimers:

This XRF Screening report is for reference purposes only. The applicant shall make its/his/her own judgment as to whether the information provided in this XRF screening report is sufficient for its/his/her purposes.

The result shown in this XRF screening report will differ based on various factors, including but not limited to, the sample size, thickness, area, surface flatness, equipment parameters and matrix effect (e.g. plastic, rubber, metal, glass, ceramic etc.). Further wet chemical pre-treatment with relevant chemical equipment analysis are required to obtain quantitative data.

# TEST REPORT

Report No.: 2501Y83065E

Date: November 27, 2025

Page 11 of 19

## A.2 Wet Chemical Testing

### A.2.1 Chromium VI (Cr(VI)) Content

#### Chromium VI (Cr(VI)) Content(In Non-metal)

Test method: IEC 62321-7-2:2017

Item	Unit	MDL	Result		Limit
			(177)		
hexavalent chromium(Cr(VI))	mg/kg	10	N.D.		1000
<b>Conclusion</b>	/	/	<b>Pass</b>		/

#### Chromium VI (Cr(VI)) Content(In metal)

Test method: IEC 62321-7-1:2015

Item	Unit	MDL	Result		Limit
			(141)	(142)	
hexavalent chromium(Cr(VI))	µg/cm <sup>2</sup>	0.10	N.D.	N.D.	See Remark
<b>Conclusion</b>	/	/	<b>Pass</b>	<b>Pass</b>	/

Limit Remark:

- The sample is positive for CrVI if the CrVI concentration is greater than 0.13µg/cm<sup>2</sup>. The sample coating is considered to contain CrVI
  - The sample is negative for CrVI if CrVI is ND (concentration less than 0.10µg/cm<sup>2</sup>). The coating is considered a non-CrVI based coating
  - The result between 0.10µg/cm<sup>2</sup> and 0.13µg/cm<sup>2</sup> is considered to be inconclusive -unavoidable coating variations may influence the determination
- For corrosion protection coatings on metals: Information on storage conditions and production date of the tested sample is unavailable and thus results of Cr(VI) represent status of the sample at the time of testing.

### A.2.2 PBBs & PBDEs content

Test method: IEC 62321-6:2015

Item	Unit	MDL	Result						Limit
			(67)	(71)	(84)	(86)	(94)	(95)	
Monobromobiphenyl (MonoBB)	mg/kg	50	N.D.	N.D.	N.D.	N.D.	N.D.	N.D.	-
Dibromobiphenyl(DiBB)	mg/kg	50	N.D.	N.D.	N.D.	N.D.	N.D.	N.D.	-
Tribromobiphenyl(TriBB)	mg/kg	50	N.D.	N.D.	N.D.	N.D.	N.D.	N.D.	-
Tetrabromobiphenyl(TetraBB)	mg/kg	50	N.D.	N.D.	N.D.	N.D.	N.D.	N.D.	-
Pentabromobiphenyl(PentaBB)	mg/kg	50	N.D.	N.D.	N.D.	N.D.	N.D.	N.D.	-
Hexabromobiphenyl(HexaBB)	mg/kg	50	N.D.	N.D.	N.D.	N.D.	N.D.	N.D.	-
Heptabromobiphenyl (HeptaBB)	mg/kg	50	N.D.	N.D.	N.D.	N.D.	N.D.	N.D.	-
Octabromobiphenyl(OctaBB)	mg/kg	50	N.D.	N.D.	N.D.	N.D.	N.D.	N.D.	-

# TEST REPORT

Report No.: 2501Y83065E

Date: November 27, 2025

Page 12 of 19

Item	Unit	MDL	Result						Limit
			(67)	(71)	(84)	(86)	(94)	(95)	
Nonabromobiphenyl(NonaBB)	mg/kg	50	N.D.	N.D.	N.D.	N.D.	N.D.	N.D.	-
Decabromobiphenyl(DecaBB)	mg/kg	50	N.D.	N.D.	N.D.	N.D.	N.D.	N.D.	-
Monobromodiphenyl ether (MonoBDE)	mg/kg	50	N.D.	N.D.	N.D.	N.D.	N.D.	N.D.	-
Dibromodiphenyl ether (DiBDE)	mg/kg	50	N.D.	N.D.	N.D.	N.D.	N.D.	N.D.	-
Tribromodiphenyl ether (TriBDE)	mg/kg	50	N.D.	N.D.	N.D.	N.D.	N.D.	N.D.	-
Tetrabromodiphenyl ether (TetraBDE)	mg/kg	50	N.D.	N.D.	N.D.	N.D.	N.D.	N.D.	-
Pentabromodiphenyl ether (PentaBDE)	mg/kg	50	N.D.	N.D.	N.D.	N.D.	N.D.	N.D.	-
Hexabromodiphenyl ether (HexaBDE)	mg/kg	50	N.D.	N.D.	N.D.	N.D.	N.D.	N.D.	-
Heptabromodiphenyl ether (HeptaBDE)	mg/kg	50	N.D.	N.D.	N.D.	N.D.	N.D.	N.D.	-
Octabromodiphenyl ether (OctaBDE)	mg/kg	50	N.D.	N.D.	N.D.	N.D.	N.D.	N.D.	-
Nonabromodiphenyl ether (NonaBDE)	mg/kg	50	N.D.	N.D.	N.D.	N.D.	N.D.	N.D.	-
Decabromodiphenyl ether (DecaBDE)	mg/kg	50	N.D.	N.D.	N.D.	N.D.	N.D.	N.D.	-
sum of MonoBDE,DiBDE,TriBDE,TetraBDE,PentaBDE,HexaBDE,HeptaBDE,OctaBDE,NonaBDE,DecaBDE	mg/kg	-	N.D.	N.D.	N.D.	N.D.	N.D.	N.D.	1000
sum of MonoBB,DiBB,TriBB,TetraBB,PentaBB,HexaBB,HeptaBB,OctaBB,NonaBB,DecaBB	mg/kg	-	N.D.	N.D.	N.D.	N.D.	N.D.	N.D.	1000
<b>Conclusion</b>	/	/	<b>Pass</b>	<b>Pass</b>	<b>Pass</b>	<b>Pass</b>	<b>Pass</b>	<b>Pass</b>	/

Item	Unit	MDL	Result					Limit
			(104)	(133)	(135)	(148)	(150)	
Monobromobiphenyl (MonoBB)	mg/kg	50	N.D.	N.D.	N.D.	N.D.	N.D.	-
Dibromobiphenyl(DiBB)	mg/kg	50	N.D.	N.D.	N.D.	N.D.	N.D.	-
Tribromobiphenyl(TriBB)	mg/kg	50	N.D.	N.D.	N.D.	N.D.	N.D.	-

Bay Area Compliance Laboratories Corp. (Shenzhen)

5/F. (B-West), 6&7/F., The 3rd Phase of Wanli Industrial Building D, Shihua Road, Fubao Community, Fubao Subdistrict, Futian District, Shenzhen, Guangdong, China

Tel: +86-755-33320018 Fax: +86-755-33320008

QB-CH-R001 (V1.0)

# TEST REPORT

Report No.: 2501Y83065E

Date: November 27, 2025

Page 13 of 19

Item	Unit	MDL	Result					Limit
			(104)	(133)	(135)	(148)	(150)	
Tetrabromobiphenyl(TetraBB)	mg/kg	50	N.D.	N.D.	N.D.	N.D.	N.D.	-
Pentabromobiphenyl(PentaBB)	mg/kg	50	N.D.	N.D.	N.D.	N.D.	N.D.	-
Hexabromobiphenyl(HexaBB)	mg/kg	50	N.D.	N.D.	N.D.	N.D.	N.D.	-
Heptabromobiphenyl (HeptaBB)	mg/kg	50	N.D.	N.D.	N.D.	N.D.	N.D.	-
Octabromobiphenyl(OctaBB)	mg/kg	50	N.D.	N.D.	N.D.	N.D.	N.D.	-
Nonabromobiphenyl(NonaBB)	mg/kg	50	N.D.	N.D.	N.D.	N.D.	N.D.	-
Decabromobiphenyl(DecaBB)	mg/kg	50	N.D.	N.D.	N.D.	N.D.	N.D.	-
Monobromodiphenyl ether (MonoBDE)	mg/kg	50	N.D.	N.D.	N.D.	N.D.	N.D.	-
Dibromodiphenyl ether (DiBDE)	mg/kg	50	N.D.	N.D.	N.D.	N.D.	N.D.	-
Tribromodiphenyl ether (TriBDE)	mg/kg	50	N.D.	N.D.	N.D.	N.D.	N.D.	-
Tetrabromodiphenyl ether (TetraBDE)	mg/kg	50	N.D.	N.D.	N.D.	N.D.	N.D.	-
Pentabromodiphenyl ether (PentaBDE)	mg/kg	50	N.D.	N.D.	N.D.	N.D.	N.D.	-
Hexabromodiphenyl ether (HexaBDE)	mg/kg	50	N.D.	N.D.	N.D.	N.D.	N.D.	-
Heptabromodiphenyl ether (HeptaBDE)	mg/kg	50	N.D.	N.D.	N.D.	N.D.	N.D.	-
Octabromodiphenyl ether (OctaBDE)	mg/kg	50	N.D.	N.D.	N.D.	N.D.	N.D.	-
Nonabromodiphenyl ether (NonaBDE)	mg/kg	50	N.D.	N.D.	N.D.	N.D.	N.D.	-
Decabromodiphenyl ether (DecaBDE)	mg/kg	50	N.D.	N.D.	N.D.	N.D.	N.D.	-
sum of MonoBDE,DiBDE,TriBDE,TetraBDE,PentaBDE,HexaBDE,HeptaBDE,OctaBDE,NonaBDE,DecaBDE	mg/kg	-	N.D.	N.D.	N.D.	N.D.	N.D.	1000
sum of MonoBB,DiBB,TriBB,TetraBB,PentaBB,HexaBB,HeptaBB,OctaBB,NonaBB,DecaBB	mg/kg	-	N.D.	N.D.	N.D.	N.D.	N.D.	1000
<b>Conclusion</b>	/	/	<b>Pass</b>	<b>Pass</b>	<b>Pass</b>	<b>Pass</b>	<b>Pass</b>	/

# TEST REPORT

Report No.: 2501Y83065E

Date: November 27, 2025

Page 14 of 19

Item	Unit	MDL	Result					Limit
			(159)	(163)	(164)	(166)	(179)	
Monobromobiphenyl (MonoBB)	mg/kg	50	N.D.	N.D.	N.D.	N.D.	N.D.	-
Dibromobiphenyl(DiBB)	mg/kg	50	N.D.	N.D.	N.D.	N.D.	N.D.	-
Tribromobiphenyl(TriBB)	mg/kg	50	N.D.	N.D.	N.D.	N.D.	N.D.	-
Tetrabromobiphenyl(TetraBB)	mg/kg	50	N.D.	N.D.	N.D.	N.D.	N.D.	-
Pentabromobiphenyl(PentaBB)	mg/kg	50	N.D.	N.D.	N.D.	N.D.	N.D.	-
Hexabromobiphenyl(HexaBB)	mg/kg	50	N.D.	N.D.	N.D.	N.D.	N.D.	-
Heptabromobiphenyl (HeptaBB)	mg/kg	50	N.D.	N.D.	N.D.	N.D.	N.D.	-
Octabromobiphenyl(OctaBB)	mg/kg	50	N.D.	N.D.	N.D.	N.D.	N.D.	-
Nonabromobiphenyl(NonaBB)	mg/kg	50	N.D.	N.D.	N.D.	N.D.	N.D.	-
Decabromobiphenyl(DecaBB)	mg/kg	50	N.D.	N.D.	N.D.	N.D.	N.D.	-
Monobromodiphenyl ether (MonoBDE)	mg/kg	50	N.D.	N.D.	N.D.	N.D.	N.D.	-
Dibromodiphenyl ether (DiBDE)	mg/kg	50	N.D.	N.D.	N.D.	N.D.	N.D.	-
Tribromodiphenyl ether (TriBDE)	mg/kg	50	N.D.	N.D.	N.D.	N.D.	N.D.	-
Tetrabromodiphenyl ether (TetraBDE)	mg/kg	50	N.D.	N.D.	N.D.	N.D.	N.D.	-
Pentabromodiphenyl ether (PentaBDE)	mg/kg	50	N.D.	N.D.	N.D.	N.D.	N.D.	-
Hexabromodiphenyl ether (HexaBDE)	mg/kg	50	N.D.	N.D.	N.D.	N.D.	N.D.	-
Heptabromodiphenyl ether (HeptaBDE)	mg/kg	50	N.D.	N.D.	N.D.	N.D.	N.D.	-
Octabromodiphenyl ether (OctaBDE)	mg/kg	50	N.D.	N.D.	N.D.	N.D.	N.D.	-
Nonabromodiphenyl ether (NonaBDE)	mg/kg	50	N.D.	N.D.	N.D.	N.D.	N.D.	-
Decabromodiphenyl ether (DecaBDE)	mg/kg	50	N.D.	N.D.	N.D.	N.D.	N.D.	-
sum of MonoBDE,DiBDE,TriBDE,TetraBDE,PentaBDE,HexaBDE,HeptaBDE,OctaBDE,NonaBDE,DecaBDE	mg/kg	-	N.D.	N.D.	N.D.	N.D.	N.D.	1000

# TEST REPORT

Report No.: 2501Y83065E

Date: November 27, 2025

Page 15 of 19

Item	Unit	MDL	Result					Limit
			(159)	(163)	(164)	(166)	(179)	
sum of MonoBB,DiBB,TriBB,TetraBB,Pe ntaBB,HexaBB,HeptaBB,OctaB B,NonaBB,DecaBB	mg/kg	-	N.D.	N.D.	N.D.	N.D.	N.D.	1000
<b>Conclusion</b>	/	/	<b>Pass</b>	<b>Pass</b>	<b>Pass</b>	<b>Pass</b>	<b>Pass</b>	/

### A.3 Phthalates(DBP, BBP, DEHP, DIBP)content

Test method: IEC 62321-8:2017

Item	Unit	MDL	Result					Limit
			(1)	(3)+(4)+(6)	(8)+(9)+(13)	(11)+(31)+(159)	(14)+(15)+(16)	
Dibutyl Phthalate(DBP)	mg/kg	30	N.D.	N.D.	N.D.	N.D.	N.D.	1000
Benzyl Butyl Phthalate(BBP)	mg/kg	30	N.D.	N.D.	N.D.	N.D.	N.D.	1000
Bis-(2-ethylhexyl) Phthalate (DEHP)	mg/kg	30	N.D.	N.D.	N.D.	N.D.	N.D.	1000
Diisobutyl phthalate(DIBP)	mg/kg	30	N.D.	N.D.	N.D.	N.D.	N.D.	1000
<b>Conclusion</b>	/	/	<b>Pass</b>	<b>Pass</b>	<b>Pass</b>	<b>Pass</b>	<b>Pass</b>	/

Item	Unit	MDL	Result					Limit
			(20)+(21)+(22)	(23)+(24)+(25)	(26)+(27)+(28)	(29)+(32)+(33)	(34)+(35)+(36)	
Dibutyl Phthalate(DBP)	mg/kg	30	N.D.	N.D.	N.D.	N.D.	N.D.	1000
Benzyl Butyl Phthalate(BBP)	mg/kg	30	N.D.	N.D.	N.D.	N.D.	N.D.	1000
Bis-(2-ethylhexyl) Phthalate (DEHP)	mg/kg	30	N.D.	N.D.	N.D.	N.D.	N.D.	1000
Diisobutyl phthalate(DIBP)	mg/kg	30	N.D.	N.D.	N.D.	N.D.	N.D.	1000
<b>Conclusion</b>	/	/	<b>Pass</b>	<b>Pass</b>	<b>Pass</b>	<b>Pass</b>	<b>Pass</b>	/

Item	Unit	MDL	Result					Limit
			(40)+(41)+(42)	(43)+(44)+(45)	(46)+(47)+(48)	(49)+(50)+(51)	(52)+(53)+(54)	
Dibutyl Phthalate(DBP)	mg/kg	30	N.D.	N.D.	N.D.	N.D.	N.D.	1000
Benzyl Butyl Phthalate(BBP)	mg/kg	30	N.D.	N.D.	N.D.	N.D.	N.D.	1000
Bis-(2-ethylhexyl) Phthalate (DEHP)	mg/kg	30	N.D.	N.D.	N.D.	N.D.	N.D.	1000
Diisobutyl phthalate(DIBP)	mg/kg	30	N.D.	N.D.	N.D.	N.D.	N.D.	1000
<b>Conclusion</b>	/	/	<b>Pass</b>	<b>Pass</b>	<b>Pass</b>	<b>Pass</b>	<b>Pass</b>	/

# TEST REPORT

Report No.: 2501Y83065E

Date: November 27, 2025

Page 16 of 19

Item	Unit	MDL	Result						Limit
			(58)+(59)+ (60)	(61)+(62)+ (63)	(66)+(70)+ (86)	(67)+(71)+ (120)	(72)+(76)+ (77)	(80)+(82)+ (84)	
Dibutyl Phthalate(DBP)	mg/kg	30	N.D.	N.D.	N.D.	N.D.	N.D.	N.D.	1000
Benzyl Butyl Phthalate(BBP)	mg/kg	30	N.D.	N.D.	N.D.	N.D.	N.D.	N.D.	1000
Bis-(2-ethylhexyl) Phthalate (DEHP)	mg/kg	30	N.D.	N.D.	N.D.	N.D.	N.D.	N.D.	1000
Diisobutyl phthalate(DIBP)	mg/kg	30	N.D.	N.D.	N.D.	N.D.	N.D.	N.D.	1000
<b>Conclusion</b>	/	/	<b>Pass</b>	<b>Pass</b>	<b>Pass</b>	<b>Pass</b>	<b>Pass</b>	<b>Pass</b>	/

Item	Unit	MDL	Result						Limit
			(88)+(90)+ (108)	(92)+(94)+ (95)	(101)+(104)+ (179)	(110)+(139)+ (144)	(113)+(115)+ (177)	(126)	
Dibutyl Phthalate(DBP)	mg/kg	30	N.D.	N.D.	N.D.	N.D.	N.D.	N.D.	1000
Benzyl Butyl Phthalate(BBP)	mg/kg	30	N.D.	N.D.	N.D.	N.D.	N.D.	N.D.	1000
Bis-(2-ethylhexyl) Phthalate (DEHP)	mg/kg	30	N.D.	N.D.	N.D.	N.D.	N.D.	N.D.	1000
Diisobutyl phthalate(DIBP)	mg/kg	30	N.D.	N.D.	N.D.	N.D.	N.D.	N.D.	1000
<b>Conclusion</b>	/	/	<b>Pass</b>	<b>Pass</b>	<b>Pass</b>	<b>Pass</b>	<b>Pass</b>	<b>Pass</b>	/

Item	Unit	MDL	Result						Limit
			(128)	(129)+(130)+ (131)	(133)+(135)	(134)	(148)+(163)+ (164)	(150)+(166)	
Dibutyl Phthalate(DBP)	mg/kg	30	55	N.D.	N.D.	N.D.	N.D.	N.D.	1000
Benzyl Butyl Phthalate(BBP)	mg/kg	30	N.D.	N.D.	N.D.	N.D.	N.D.	N.D.	1000
Bis-(2-ethylhexyl) Phthalate (DEHP)	mg/kg	30	179	79	N.D.	41	N.D.	N.D.	1000
Diisobutyl phthalate(DIBP)	mg/kg	30	N.D.	N.D.	N.D.	N.D.	N.D.	N.D.	1000
<b>Conclusion</b>	/	/	<b>Pass</b>	<b>Pass</b>	<b>Pass</b>	<b>Pass</b>	<b>Pass</b>	<b>Pass</b>	/

Item	Unit	MDL	Result					Limit
			(153)+(154)	(155)+(156)+ (176)	(158)	(170)	(172)+(173)+ (174)	
Dibutyl Phthalate(DBP)	mg/kg	30	N.D.	N.D.	N.D.	N.D.	N.D.	1000
Benzyl Butyl Phthalate(BBP)	mg/kg	30	N.D.	N.D.	N.D.	N.D.	N.D.	1000
Bis-(2-ethylhexyl) Phthalate (DEHP)	mg/kg	30	N.D.	N.D.	N.D.	128	N.D.	1000
Diisobutyl phthalate(DIBP)	mg/kg	30	N.D.	N.D.	N.D.	N.D.	N.D.	1000
<b>Conclusion</b>	/	/	<b>Pass</b>	<b>Pass</b>	<b>Pass</b>	<b>Pass</b>	<b>Pass</b>	/

Bay Area Compliance Laboratories Corp. (Shenzhen)

5/F. (B-West), 6&7/F., The 3rd Phase of Wanli Industrial Building D, Shihua Road, Fubao Community, Fubao Subdistrict, Futian District, Shenzhen, Guangdong, China

QB-CH-R001 (V1.0)

Tel: +86-755-33320018 Fax: +86-755-33320008



# TEST REPORT

**Report No.: 2501Y83065E**

Date: November 27, 2025

Page 17 of 19

Note:

- N.D.= Not Detected or less than MDL
- MDL = Method Detection Limit
- "+" = Composite testing.
- The Result less than MDL are not taken into account while calculating the sum contents.

\*\*\*\*\*

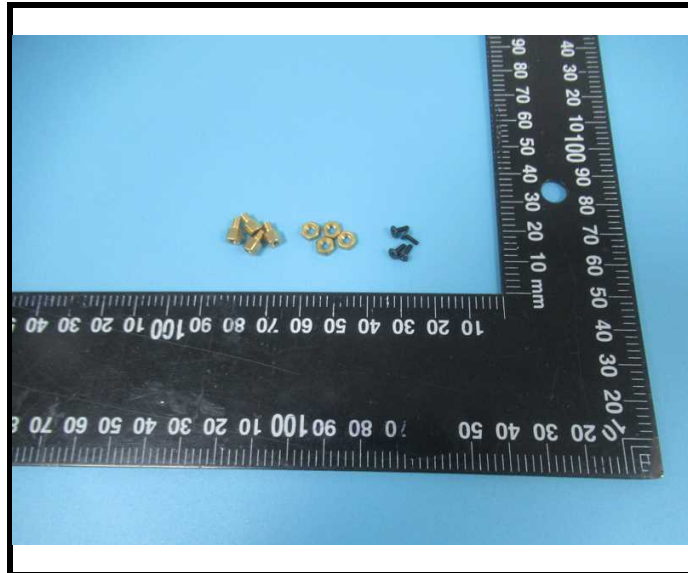
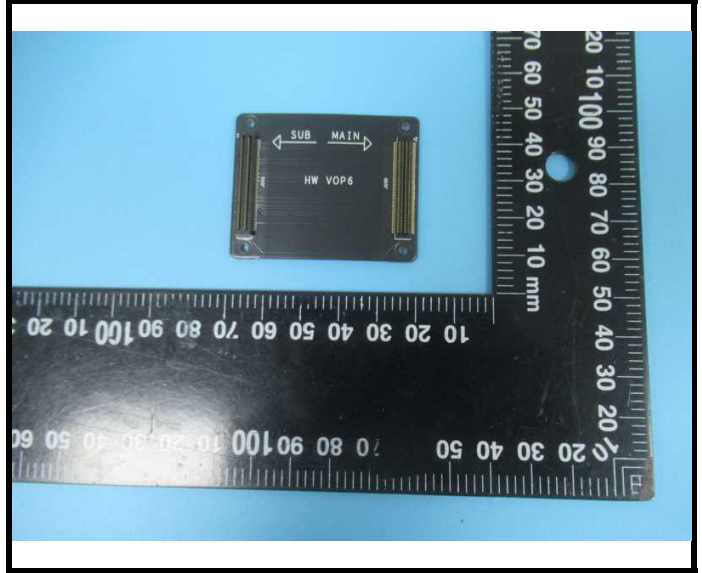
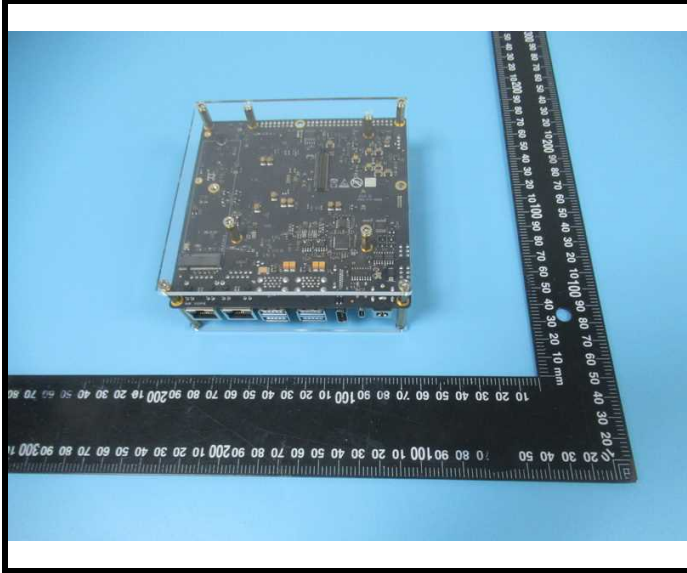
# TEST REPORT

Report No.: 2501Y83065E

Date: November 27, 2025

Page 18 of 19

Photograph of Sample



BACL authenticate the photo on original report only

# TEST REPORT

**Report No.: 2501Y83065E**

Date: November 27, 2025

Page 19 of 19

Statement:

- 1.This report cannot be reproduced except in full, without prior written approval of the Company.
- 2.Unless otherwise stated the results shown in this test report refer only to the sample(s) tested and such sample(s) are retained for 30 days only.
- 3.This report is valid only with a valid digital signature. The digital signature may be available only under the Adobe software above version 7.0.
- 4.Otherwise required by the applicant or Product Regulations, Decision Rule in this report did not consider the uncertainty.
- 5.The information which provided by the applicant, such as sample description, sample name, material component, style/item No. , P.O. No. , manufacturer, age phase, the laboratory is not responsible for its authenticity and this information can affect the validity of the result in the test report.
- 6.The test samples were in good condition before testing.

\*\*\* End of Report \*\*\*